



# MA7

## TCP/IP Announcement Console



### USER MANUAL

English - Revised Interface Edition



**enormPA**

Network-based live announcement, stored message and zone control console

## Document Scope and Revision Notes

This manual covers the EnormPA MA7 TCP/IP Announcement Console. It explains basic installation, daily touchscreen operation and configuration through the Mikafon MA7 web interface.

**SOFTWARE REVISION:** Screens, menu names and available options may differ slightly according to firmware, project configuration or production revision. The examples in this manual are based on the Mikafon MA7 v3.1 web interface.

| Field                        | Information  |
|------------------------------|--|
| Product                      | MA7 TCP/IP Announcement Console  |
| Primary use                  | Zone-selective live announcements, stored messages, scheduled playback and music control over TCP/IP |
| User interface               | 7-inch capacitive touch LCD panel and browser-based configuration interface                          |
| Audio interfaces             | Gooseneck microphone, built-in monitoring speaker and 3.5 mm monitoring jack                         |
| Network                      | Ethernet; optional PoE depending on production / project configuration                               |
| Power                        | 12 V DC  |
| Audio codec support          | G.711 and G.722  |
| Buttons per touchscreen page | Up to 16 zone / group / message buttons  |

# Contents

- 1. Purpose and Intended Use**
- 2. Product Overview**
- 3. Safety and Operating Precautions**
- 4. Package Contents**
- 5. Controls and Connections**
- 6. Initial Installation and Commissioning**
- 7. Accessing the Web Interface**
- 8. Web Interface Menus**
- 9. MA7 Touchscreen Operation**
- 10. Common Operating Workflows**
- 11. Maintenance, Cleaning and Storage**
- 12. Troubleshooting**
- 13. Technical Specifications**
- 14. Service and Support**

## 1. Purpose and Intended Use

The MA7 is designed for supervised public-address and voice-alarm system operation. It allows an operator to select individual zones or groups, make live announcements, play stored messages, manage music routing and create scheduled message tasks. Network configuration, zone definitions, grouping and system permissions should be carried out by authorised technical personnel.

**IMPORTANT:** For emergency or evacuation use, commissioning, cause-and-effect programming and acceptance tests must follow the approved project design and applicable standards.

## 2. Product Overview

MA7 is a TCP/IP-based announcement console in the EnormPA / ESCO system family. The console combines a gooseneck microphone, built-in monitoring speaker, 7-inch capacitive touch panel, Ethernet communication and web-based configuration in a compact desktop enclosure.

- Live announcement to selected zones or predefined groups.
- Stored-message playback with optional start and end tones.
- Music broadcast control for configured zones.
- Zone-based volume and mute control.
- Grouping of zones through the web interface.
- Up to 16 display buttons per touchscreen page, with page navigation when additional buttons are configured.
- Preview of stored messages through the built-in speaker.
- Password-protected operation when enabled.
- Scheduled announcement tasks with cancellation / editing from the software.
- Selectable interface language, depending on installed software revision.

## 3. Safety and Operating Precautions

- Use the unit only within the specified temperature and humidity range.
- Do not expose the console to water, condensation, excessive dust, direct sunlight or strong heat sources.
- Use the supplied or manufacturer-approved 12 V DC adapter. Use PoE only when the supplied unit and project configuration support it.
- Ensure that the Ethernet plug is fully seated. Loose or damaged network cables can interrupt announcements.
- Do not carry the console by the microphone stem. Do not force or sharply bend the gooseneck.
- Operate the touch panel with a finger or suitable stylus. Do not use sharp, metallic or cutting objects.
- Do not open the enclosure or modify internal circuits. Service work must be performed by authorised personnel.
- Test live announcement, stored message, tone and scheduled functions regularly in accordance with the project maintenance plan.

## 4. Package Contents

| Quantity    | Component                               |
|-------------|---|
| 1           | MA7 announcement console                |
| 1           | 12 V DC power adapter                   |
| 1           | Ethernet cable (CAT6 or equivalent)     |
| 1           | User manual / project documentation     |
| As supplied | Configuration software or project files |

**PACKAGE CONTENT:** The exact supplied accessories may vary according to project or order configuration. Report missing or damaged items before commissioning the unit.

## 5. Controls and Connections

### 5.1 Front and top controls



Figure 1 - MA7 console and touchscreen layout

| Control                      | Function  |
|------------------------------|---|
| 7-inch touch LCD panel       | Zone selection, live announcement, stored message, music, volume and settings operations. |
| Gooseneck microphone         | Voice input for live announcements. Approximate microphone length: 38 cm.                 |
| Built-in monitoring speaker  | Pre-listening to stored messages and monitoring start/end tones or interface feedback.    |
| Touchscreen page navigation  | Moves between pages when more than 16 buttons are configured.                             |
| Microphone / transmit button | Starts or controls live announcement according to the active software screen.             |
| Volume adjustment pot        | Adjusts the announcement volume manually from the rear panel.                             |

## 5.2 Rear connections

| Connection       | Description   |
|------------------|---|
| Ethernet port    | Connects MA7 to the TCP/IP network and compatible system devices.                       |
| 12 V DC input    | Power input for the external adapter.   |
| 3.5 mm mini jack | Headphone / monitoring connection.  |
| Optional PoE     | Power through Ethernet is available only on supported product / project configurations. |

## 6. Initial Installation and Commissioning

1. Place the console on a stable, level surface within comfortable reach of the operator.
2. Adjust the gooseneck microphone toward the operator without applying excessive force.
3. Connect the Ethernet cable between MA7 and the system network switch.
4. Connect the 12 V DC adapter and then connect the adapter to mains power. When PoE is used, confirm that both MA7 and the network port support the required PoE configuration.
5. Wait for the touch display to start and confirm that the interface responds correctly.
6. Connect a commissioning computer to the same network and open the MA7 web interface.
7. Configure network settings, device list, zones, groups, touchscreen buttons, tones and scheduled tasks.
8. Perform test announcements in every intended zone. Test live speech, stored messages, start/end tones, music routing, volume and mute separately.

**COMMISSIONING:** Record the final IP address, MAC address, software version, zone list, group definitions, password settings and backup file in the project documentation.

## 7. Accessing the Web Interface

MA7 configuration is performed through a browser-based interface. The commissioning computer and MA7 must be connected to the same IP network or subnet.

| Item                 | Default / recommended value                   |
|----------------------|---|
| Factory IP address   | 192.168.1.161                                 |
| Web address          | http://192.168.1.161/html                     |
| Recommended browsers | Google Chrome or Mozilla Firefox              |
| Interface title      | Mikafon MA7 web interface                     |
| After an IP change   | Use the new address in the same /html format. |

**NETWORK ACCESS:** If the computer is not in the same IP range as MA7, the web interface cannot be opened. Configure the computer with a compatible temporary IP address before commissioning.

## 8. Web Interface Menus

The following section follows the menu order shown in the supplied MA7 interface introduction video.

### 8.1 Status

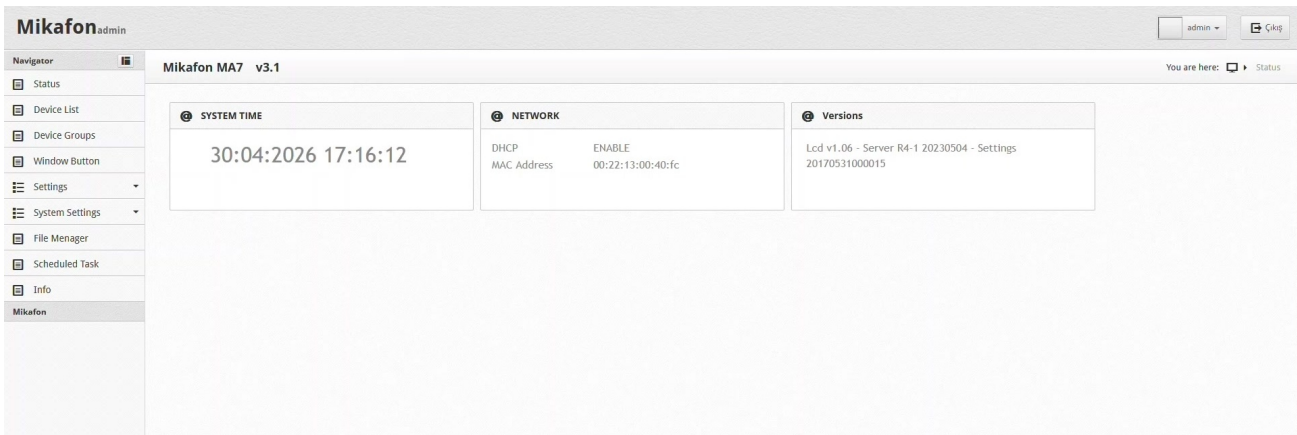


Figure 2 - Status page

The Status page is the first commissioning checkpoint. It shows system time, network status, MAC address, DHCP state and installed LCD / server / settings versions.

- Confirm that date and time are correct before creating scheduled tasks.
- Record the MAC address and software versions.
- Verify the expected DHCP status before changing network parameters.

## 8.2 Device List

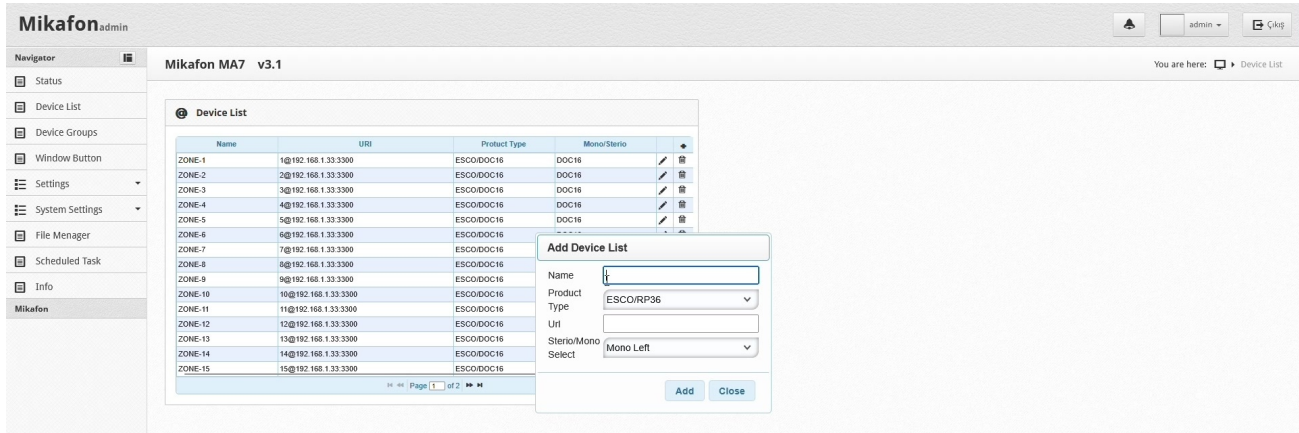


Figure 3 - Device List

Device List defines the zones and IP devices with which MA7 communicates. Add the required zones of DOC8 or DOC16 and, where installed, compatible devices such as RP10 clients and the MS40 music server.

1. Open Device List and select the Add command.
2. Enter a clear device list or zone name.
3. Select the correct product type.
4. Enter the IP address or URL in the exact format required for the selected device type.
5. Select the applicable channel / stereo option when shown.
6. Save the entry and confirm that it appears in the list.
7. Perform a test announcement to every newly added zone.

**URL FORMAT:** An incorrect IP or URL format prevents communication. Do not copy an example address without adapting it to the actual project network.

## 8.3 Device Groups

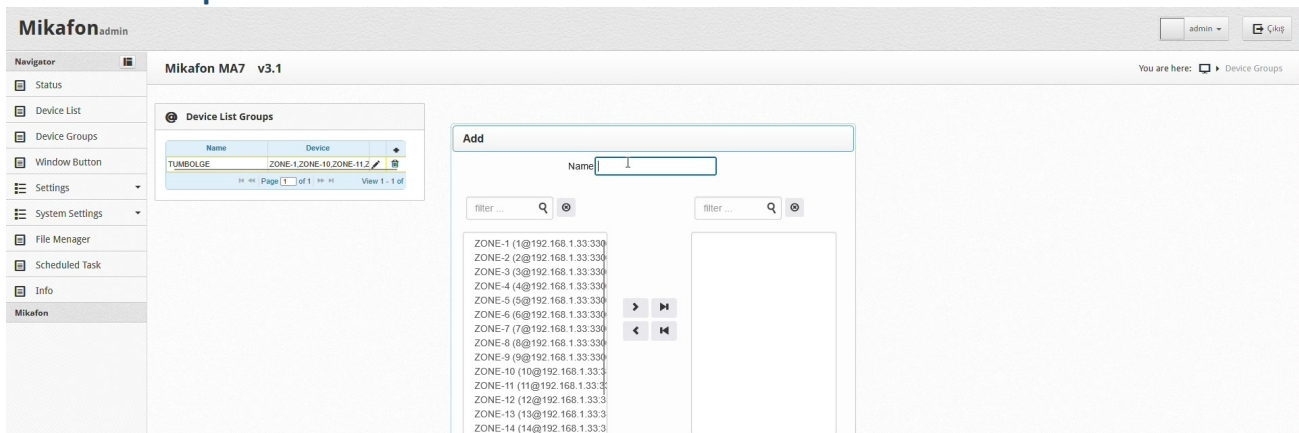


Figure 4 - Device Groups

Device Groups combines zones already created in Device List. A group allows several zones to be selected with one button during live announcements or stored-message playback.

1. Select Add and enter a short, clear group name.
2. Choose the required zones from the available list.
3. Move the selected zones into the group list using the arrow controls.
4. Save the group and confirm that it appears in the group table.
5. Add the group to the touchscreen in Window Button if it must be available to the operator.

## 8.4 Window Button

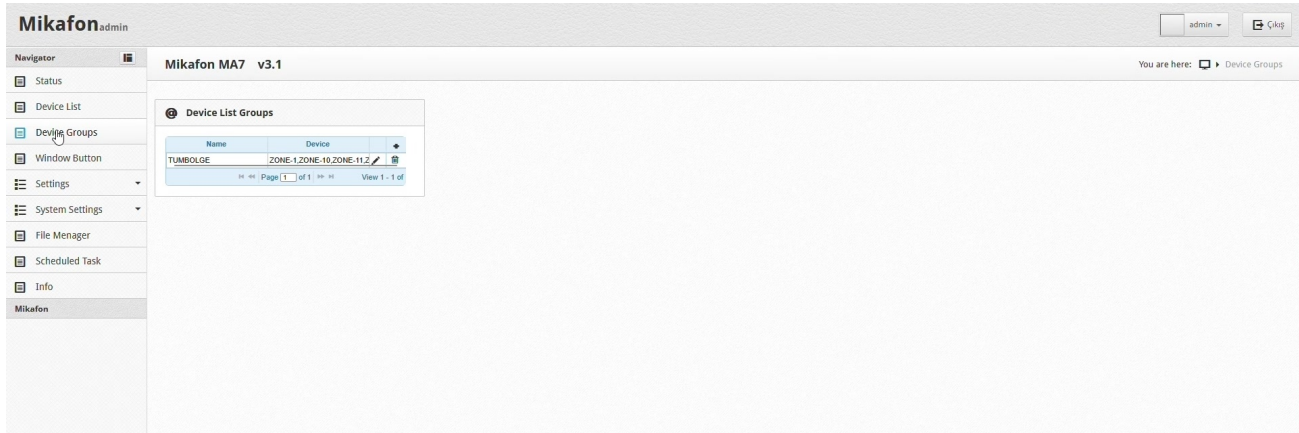


Figure 5 - Window Button

Window Button controls which zone, group and manual-message buttons are displayed on the MA7 touchscreen and in which order they appear.

- Select the zone buttons that must be available to the operator.
- Add group buttons after the required zones. In the demonstrated interface, groups should be placed at the bottom of the list.
- Select manual-message buttons that must appear on the screen.
- Arrange frequently used functions first.
- When more than 16 buttons are configured, additional buttons appear on following touchscreen pages.

## 8.5 Settings / System

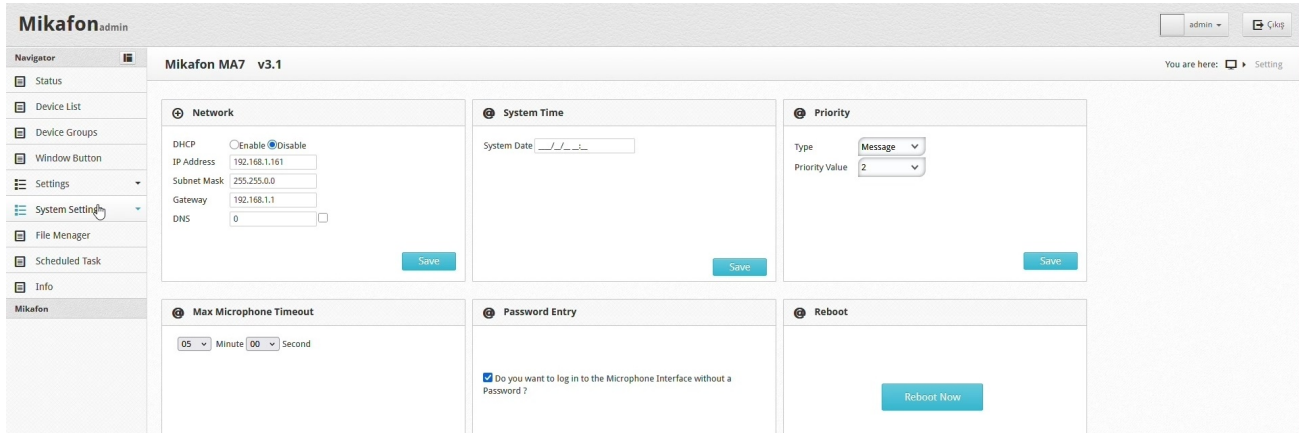


Figure 6 - Settings / System

| Panel                  | Function   |
|------------------------|--|
| Network                | DHCP, IP address, subnet mask, gateway and DNS settings.                         |
| System Time            | Sets the MA7 system date and time. Correct time is required for scheduled tasks. |
| Priority               | Selects message or live-announcement priority values.                            |
| Max Microphone Timeout | Limits the maximum continuous microphone operating time.                         |
| Password Entry         | Enables or disables login without a password, according to the selected option.  |
| Reboot                 | Restarts MA7 after significant configuration changes.                            |

**IP CHANGE:** Record the new IP address before saving. After an address change, reconnect using the new address.

## 8.6 Settings / Tone

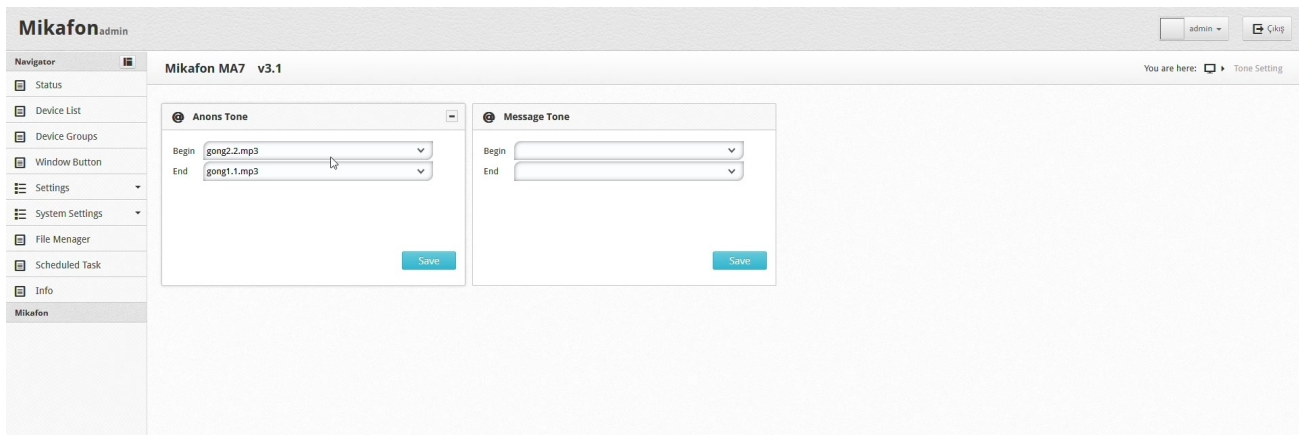


Figure 7 - Announcement and Message Tone settings

Tone settings assign opening and closing audio files to live announcements and stored-message playback.

- Anons Tone / Announcement Tone: beginning and ending tones for live microphone announcements.
- Message Tone: beginning and ending tones for stored messages.
- The Begin and End fields may use different files.
- Tone files must first be uploaded through File Manager.
- Select Save after changing each tone assignment.

## 8.7 System Settings / Backup

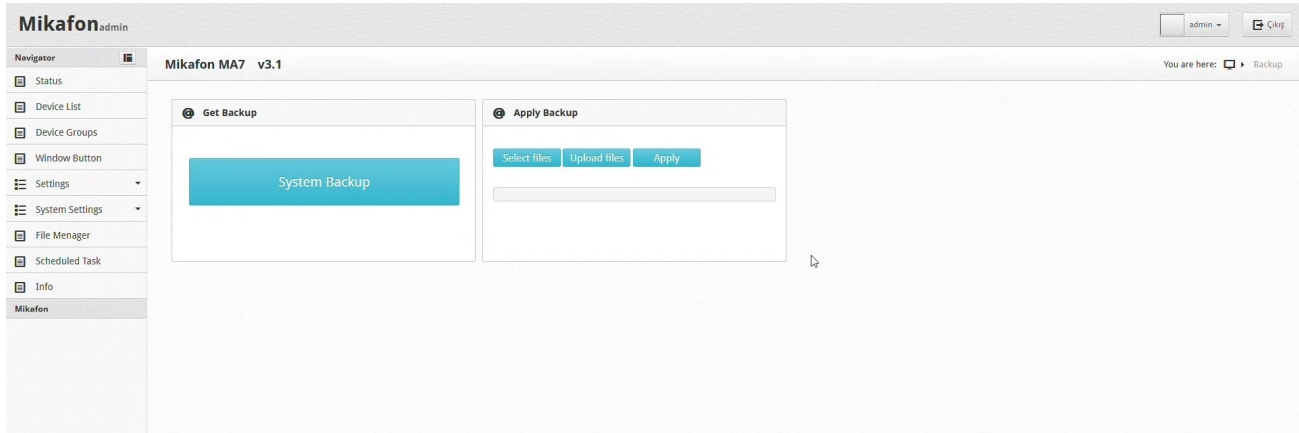


Figure 8 - System backup and restore

The Backup menu is used to download the active MA7 configuration or apply a previously saved backup file.

- Get Backup / System Backup: download and securely archive the current configuration.
- Apply Backup: select the required backup file, upload it and apply the configuration.
- Create a backup before major network, zone, group, button or scheduling changes.
- After restoring a backup, verify the IP address and perform test announcements.

**CAUTION:** Applying a backup can replace the active configuration. Authorised technical personnel only.

## 8.8 File Manager

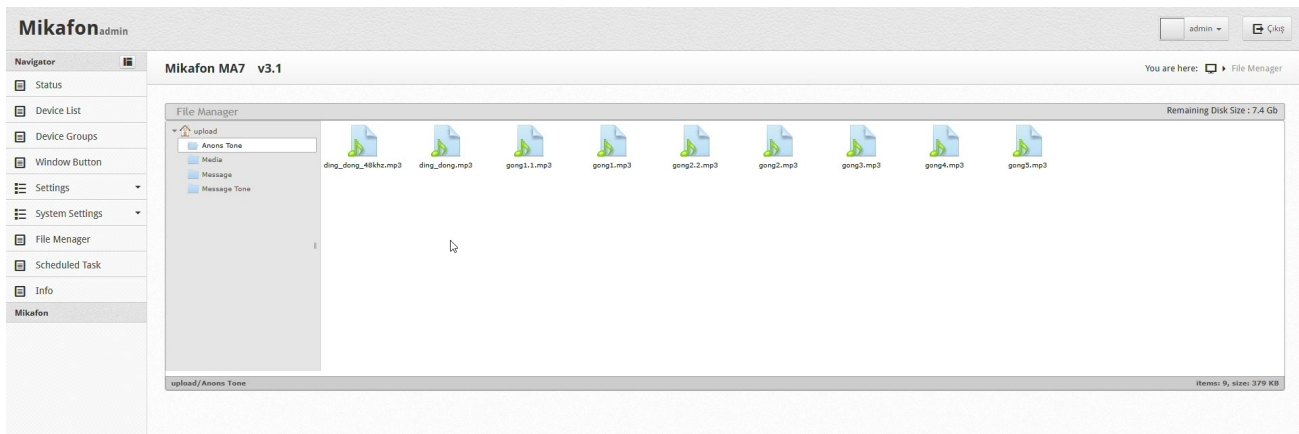


Figure 9 - File Manager

File Manager stores recorded messages and announcement / message tones. Files can be added through the upload area or by drag-and-drop, depending on the browser and software revision.

- Use simple file names with English letters and numbers.
- Avoid characters other than Latin, unsupported symbols and unnecessarily long names.
- Prepare audio at 48 kHz when possible for reliable system compatibility.
- Check the remaining disk space before uploading large files.
- Confirm that the uploaded file appears in the correct folder before assigning it to a tone, touchscreen button or scheduled task.
- Do not delete or rename a file that is already assigned without updating all related settings.

## 8.9 Scheduled Task

The screenshot shows the 'Scheduled Task' configuration page in the Mikafon MA7 v3.1 web interface. The left sidebar contains navigation options like Status, Device List, Device Groups, Window Button, Settings, System Settings, File Manager, Scheduled Task, and Info. The main content area is titled 'Scheduled Task' and contains a form with the following fields and options:

- Task Name: TEST
- Message Name: tet (with an 'Add' button)
- Clients: (with an 'Add' button)
- Note: (text area)
- Time: (time selection field with 'Add' and 'Del' buttons)
- Start Task: (date selection field)
- End Task:  Never  On
- Repeat:  Once  Daily  Weekly
- Priority: 2 (dropdown menu)

At the bottom of the form are buttons for 'New Record', 'Save', and 'Update'. Below the form is a table with columns: Task Name, State Again, Music Name, Task Date. The table is currently empty, displaying 'Page 1 of 0' and 'No records to view'.

Figure 10 - Scheduled Task

Scheduled Task creates automatic stored-message announcements at defined dates and times. The message must already be available in File Manager, and destination zones must already exist in Device List.

| Field           | Description   |
|-----------------|---|
| Task Name       | Short, unique task identifier.                            |
| Message Name    | Uploaded message file to be broadcast.                    |
| Clients / Zones | Destination zones or groups.                              |
| Note            | Optional operational description.                         |
| Time            | One or more broadcast times.                              |
| Start Task      | Date on which the task becomes active.                    |
| End Task        | End date or no-end option, depending on software version. |
| Repeat          | Once, Daily or Weekly.                                    |
| Repeat On       | Weekday selection for weekly operation.                   |
| Priority        | Relative task priority.                                   |

1. Enter the task name and select the required message.
2. Add the destination zones or groups.
3. Add one or more playback times.
4. Set the start date and, when required, the end date.
5. Select the repeat method and weekdays.
6. Set the priority and save the task.
7. Confirm that the task appears in the list and perform a supervised test.

## 8.10 Info

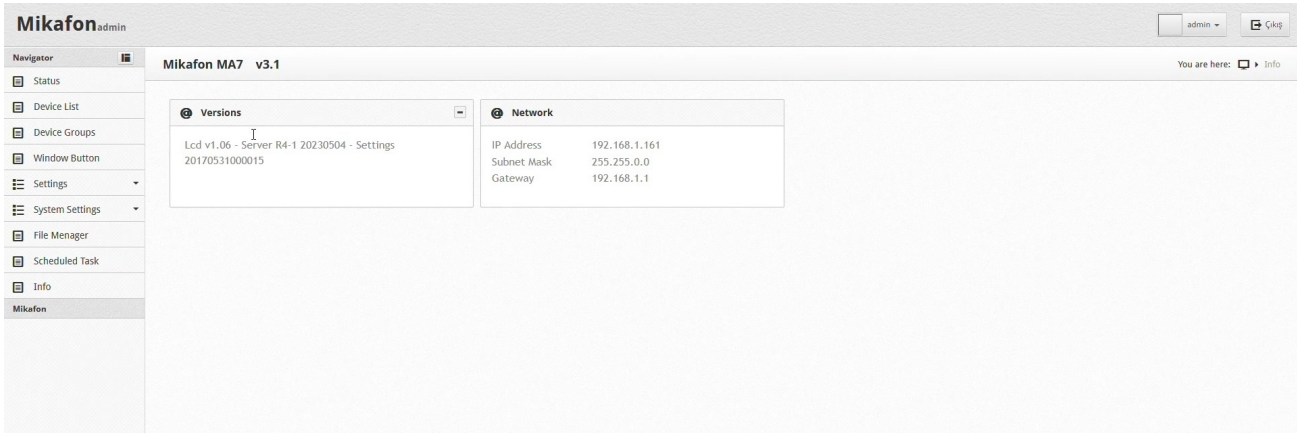


Figure 11 - Info page

The Info page displays general software-version and network information. Use it when recording commissioning data or when requesting technical support.

## 9. MA7 Touchscreen Operation

### 9.1 Main screen structure

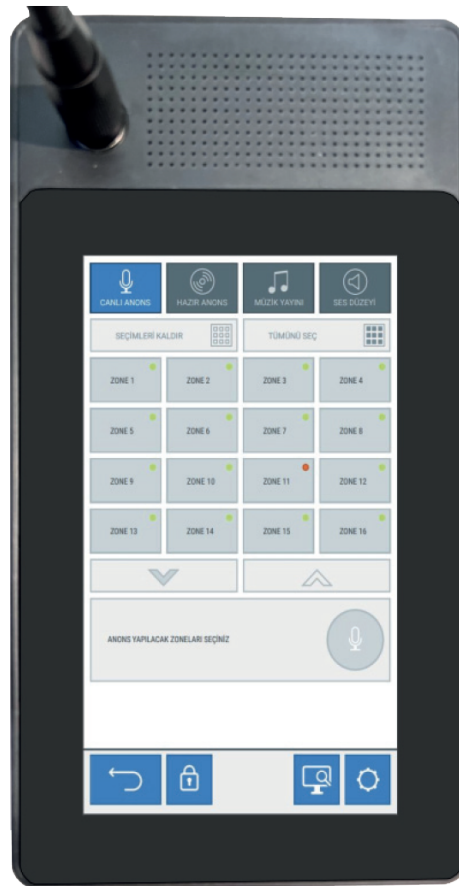


Figure 12 - MA7 touchscreen example

The standard touchscreen provides four principal operating areas: Live Announcement, Stored Announcement / Message, Music Broadcast and Volume. Zone and group buttons are displayed in the centre of the screen. Up to 16 buttons are shown on each page.

| Control                       | Use  |
|-------------------------------|--|
| Live Announcement             | Make a real-time microphone announcement to selected zones or groups.                |
| Stored Announcement / Message | Play a preloaded message to selected zones or groups.                                |
| Music Broadcast               | Start or manage music distribution to selected zones.                                |
| Volume                        | Adjust zone volume and mute status.  |
| Select All                    | Select all available destinations.   |
| Clear Selection               | Remove active zone / group selections.   |
| Page arrows                   | Move to the previous or next button page.  |
| Lock                          | Lock the console against unauthorised operation when password protection is enabled. |

**STATUS INDICATORS:** Small coloured indicators on zone buttons show connection or system state. The color will be normally green, it will change to red if the connection is broken or the zone is busy.

## 9.2 Selecting zones and groups

1. Open the required operating menu.
2. Touch each zone or group that must receive the broadcast.
3. Use Select All only after confirming that an all-zone broadcast is appropriate.
4. Use the page arrows when the required destination is on another page.
5. Use Clear Selection to remove incorrect or completed selections.

## 9.3 Making a live announcement

1. Open Live Announcement.
2. Select the required zones or groups.
3. Press the on-screen microphone / transmit control.
4. Wait for the opening tone, when configured.
5. Speak clearly from approximately 10-20 cm away from the microphone.
6. Stop the transmit control by pressing again, when the announcement is complete.
7. Active destination selections are cleared automatically.

**GOOD PRACTICE:** Use short, clear and repeatable wording. Avoid speaking directly toward the built-in speaker at high monitoring volume, as this may increase acoustic feedback risk.

## 9.4 Playing a stored message

1. Open Stored Announcement / Message.
2. Select the required message.
3. Select the destination zones or groups.
4. Preview the message through the built-in speaker when required.
5. Start playback and monitor the active task.
6. Cancel the task only when operationally permitted.

## 9.5 Music broadcast

1. Open Music Broadcast.
2. Select the required zones or groups.
3. Select or start the configured music source.
4. Open Volume when level adjustment is required.
5. Stop the music or clear the destination selections when finished.

## 9.6 Volume and mute

1. Open Volume.
2. Select the zone or group to be adjusted.
3. Use mute only when appropriate for the system operating condition.
4. Perform an audio check after changing the level.

## 9.7 Lock and password

Password protection can be enabled through Settings / System. When active, the lock control prevents unauthorised panel use and may require a password before critical operations.

- Password changes should be made only by the authorised system administrator.
- Store the password securely in the project documentation.
- If the password is lost, contact the system administrator or authorised service.

# 10. Common Operating Workflows

## 10.1 Announcement to one zone

1. Open Live Announcement.
2. Select the required zone.
3. Press the microphone control and make the announcement.
4. Stop transmission.

## 10.2 Announcement to several zones

1. Open Live Announcement.
2. Select each destination or use a predefined group.
3. Make the announcement.
4. Stop transmission.

## 10.3 All-zone announcement

1. Open Live Announcement.
2. Use Select All.
3. Verify the selected destinations.
4. Make the announcement.
5. Stop transmission.

## 10.4 Creating an automatic message schedule

1. Upload the audio file through File Manager.
2. Confirm that the file appears in the correct folder.
3. Open Scheduled Task.
4. Enter task name, message, zones, time and repeat settings.
5. Save and confirm the task in the list.
6. Perform a supervised test at the planned time.

## 11. Maintenance, Cleaning and Storage

- Disconnect power before cleaning the console.
- Clean the screen with a dry or slightly damp microfibre cloth. Do not use abrasive or solvent-based cleaners.
- Inspect the microphone windscreen and gooseneck periodically. Replace damaged or heavily soiled parts.
- Check that Ethernet and power connections remain secure.
- Store the unit in a dry, dust-free environment protected against impact when it is not used for a long period.
- Carry out periodic live announcement, stored message, tone, group, mute and scheduled-task tests.

## 12. Troubleshooting

| Symptom                             | Possible cause  | Corrective action   |
|-------------------------------------|---|---|
| Unit does not start                 | No adapter power, incorrect supply or unsupported PoE connection.                               | Check the 12 V DC adapter and mains outlet. When PoE is used, verify the supported switch and port.     |
| Web interface cannot be opened      | Computer is on another subnet, IP address changed or Ethernet link is absent.                   | Check Ethernet, computer IP settings and the current MA7 address. Factory format is 192.168.1.161/html. |
| Zone does not appear on touchscreen | Device List or Window Button configuration is incomplete.                                       | Check the zone in Device List and confirm it is selected and correctly ordered in Window Button.        |
| No announcement audio               | Wrong zone selection, network device offline, low volume or microphone transmission not active. | Verify destination selection, online device status, volume and microphone control.                      |
| Stored message does not play        | File missing, unsupported name / format or wrong folder assignment.                             | Check File Manager. Use simple English file names and a 48 kHz source file where possible.              |
| Scheduled task does not run         | System time, date range, repeat settings or zone selection are incorrect.                       | Check System Time and every Scheduled Task field, then run a supervised test.                           |
| Password rejected                   | Incorrect or previously changed password.   | Contact the authorised system administrator or service.   |
| Volume is too low                   | Zone level is low, mute is active or downstream amplifier / speaker levels are incorrect.       | Check MA7 volume, mute status and the connected audio system.   |
| File upload fails                   | Insufficient disk space, invalid file name or interrupted network connection.                   | Check remaining storage, simplify the file name and upload again over a stable connection.              |

## 13. Technical Specifications

### 13.1 Electrical and network

| Parameter                 | Value   |
|---------------------------|---|
| Power supply              | 12 V DC   |
| Power connector           | 3.5 mm jack                                       |
| Network interface         | 1 x Ethernet port                                 |
| Optional power            | PoE, depending on product / project configuration |
| Audio encoding / decoding | G.711 and G.722                                   |
| Monitoring connection     | 3.5 mm mini jack                                  |

### 13.2 Performance and display

| Parameter        | Value   |
|------------------|---|
| System memory    | 4 GB total; available message space depends on software and configuration |
| Display          | 7-inch capacitive touch LCD panel   |
| Resolution       | 480 x 272 pixels  |
| Brightness       | Approximately 250 cd/m <sup>2</sup>                                       |
| Buttons per page | 16  |
| Page navigation  | Previous / next page arrows when more buttons are configured              |

### 13.3 Mechanical

| Parameter              | Value                 |
|------------------------|-----------------------|
| Dimensions (H x W x D) | 65 x 180 x 160 mm     |
| Weight                 | 0.9 kg                |
| Colour                 | Black                 |
| Housing                | Non-flammable plastic |
| Microphone length      | 38 cm                 |
| Console tilt           | 12°                   |

### 13.4 Environmental

| Parameter             | Value                      |
|-----------------------|----------------------------|
| Operating temperature | 0°C to +40°C               |
| Relative humidity     | 35% to 80%, non-condensing |

**SPECIFICATION CONTROL:** Product specifications may change with production or software revision. For tender, certification or project submittals, verify the current product label, official factsheet and applicable declaration documents.

## 14. Service and Support

For installation, commissioning, IP configuration, zone / group editing, software updates or fault diagnosis, contact authorised technical service or Mikafon Elektronik.

| Field        | Information   |
|--------------|---|
| Company      | Mikafon Elektronik  |
| Address      | Cumhuriyet Mh. Keten Sk. No.11, Çayırova / KOCAELİ, Türkiye |
| Telephone    | +90 212 244 5177  |
| E-mail       | info@mikafon.com.tr   |
| Web          | www.mikafon.com.tr  |
| Product page | mikafon.com.tr/urunler/urun-detay/ma7                       |