

## DS637

EN54-24 Compliant

Wall Mounted Speaker



DS637 is wall mounted EN54-24 compliant speaker that is used in Public Address and Voice Alarm Sytem EnormPA. DS637 is designed to be a solution for paging, evacuation and background music in closed spaces such as schools, factories and buildings.

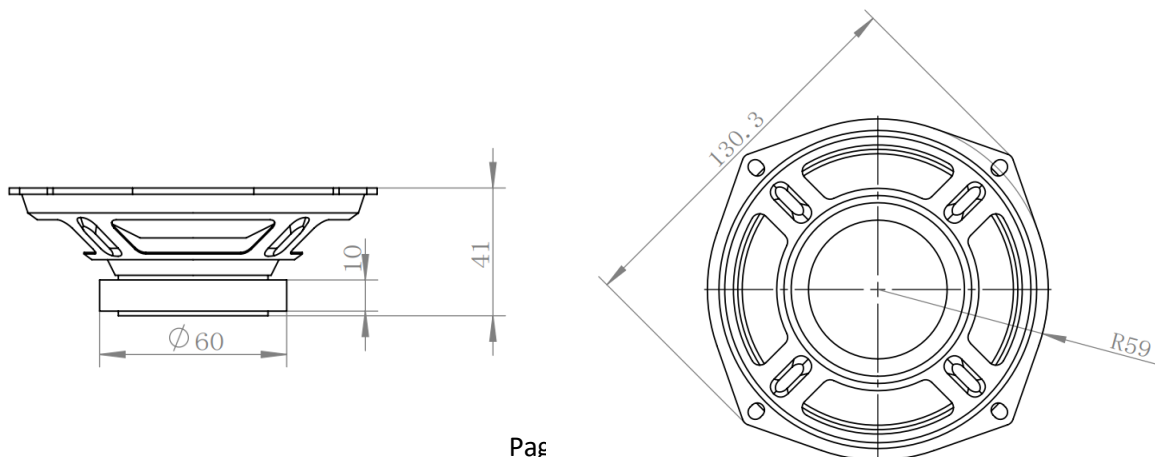
It is equipped with 5" built in full range speaker, a 100V multi tap transformer, a ceramic speaker line connector and a thermal fuse. It can be mounted to a ceiling or wall easily by a screw, horizontal or vertical as desired. Outside is made of fireproof ABS plastic and front grill is made of steel. It comes as white, gray and black options.

The 100V speaker is equipped with a high quality multi tap 2.5 – 5 watts 100V transformer.

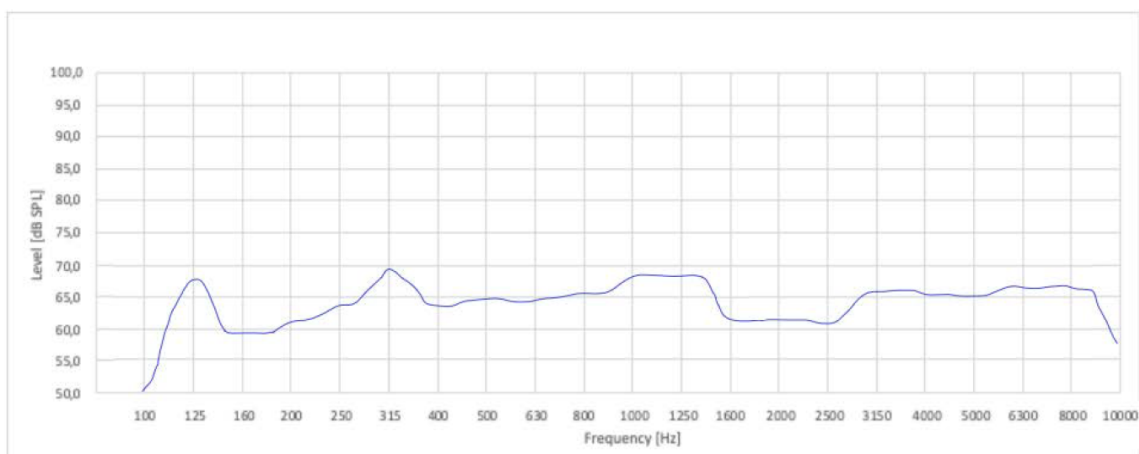
### Technical Specifications

Rated Power: 6W (100V)	Loudspeaker System: Full Range	
Transformer Power Taps: 2.5 – 5W	Measurement Environment: free-field	
Impedance: 2.5W-6.1 k $\Omega$ / 5W-3.9 k $\Omega$	Main Material: ABS Plastic & Steel	
Sensitivity: 77 dB	Measurements: 300 x 198 x 85 mm	
Frequency Response: 90 Hz – 16 kHz	Color: Black, White	
100V Application: Yes	Weight: 950 gr (1pcs.)	
SPL 1W/1M Peak: 85 dB / W $\pm$ 2dB	Enclosure: EN60529 IP21C Type A	
SPL 1W/4M Peak: 79 dB / W $\pm$ 2dB	ABS Plastic Enclosure	IEC 60695-11-10
SPL Rated Noise Power/4M: 83 dB		UL94

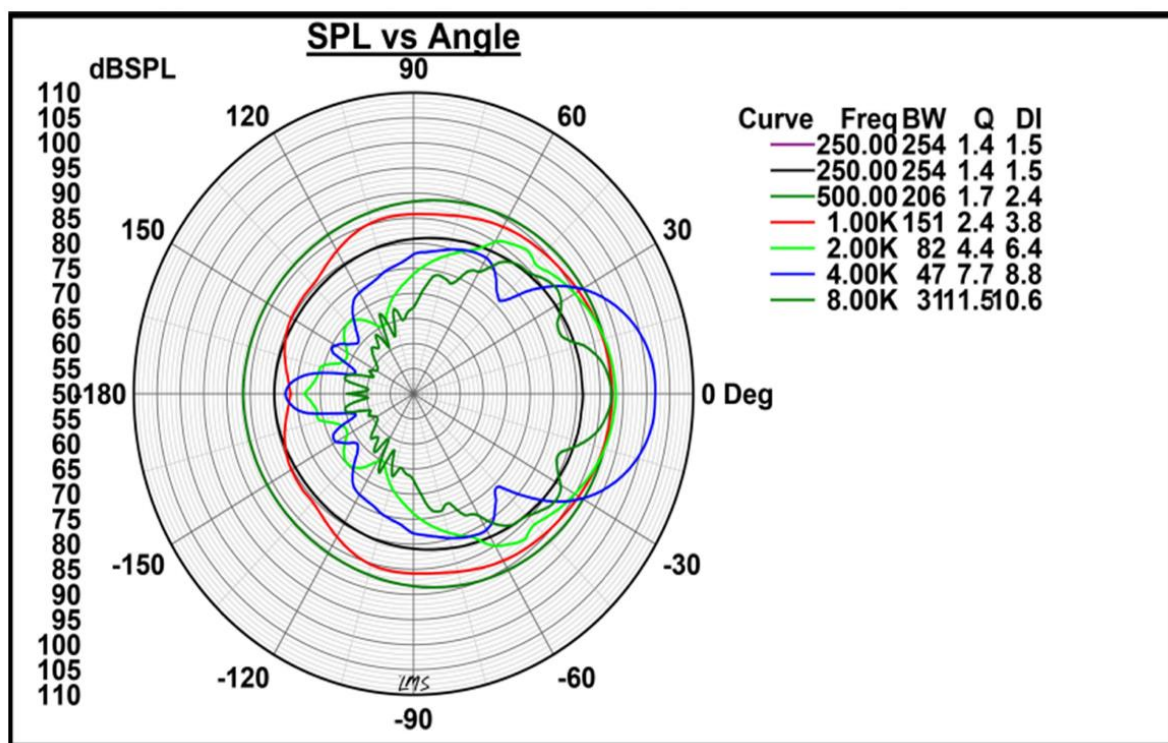
### Speaker Dimensions



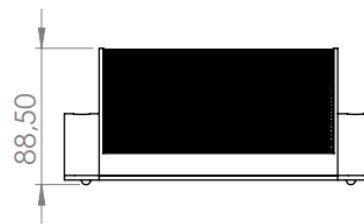
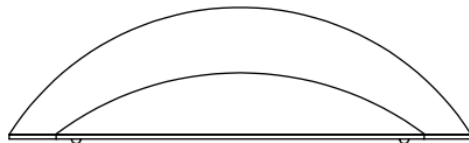
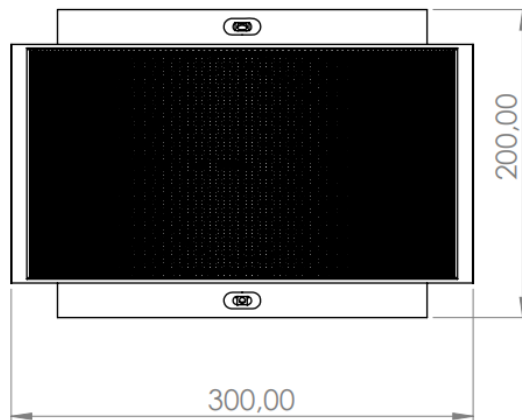
## Frequency Response 1W/4M



## Polar Plot



## Dimensions



## Installation Instructions

Speaker DS-637 is suitable for wall mount installation. When placing the device, for it to be operated smoothly, the ventilation gaps should not be blocked and the device should be screwed from the 2 edges to the wall. When placing the device make sure that there is enough space around. Speaker can be mounted to the wall horizontally or vertically.

1



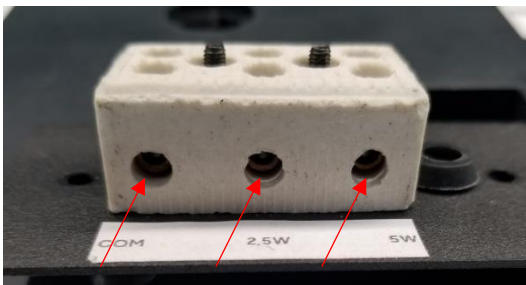
Open the small lid, behind of the speaker, by unscrewing the two marked places in the above figure.

2



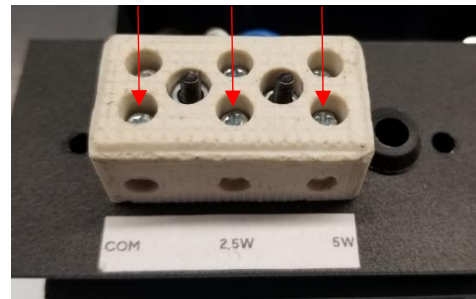
Loosen the screws seen in the above figure which are going to be used for the application. For 2.5W, use COM and 2.5W; for 5W, use COM and 5W.

3



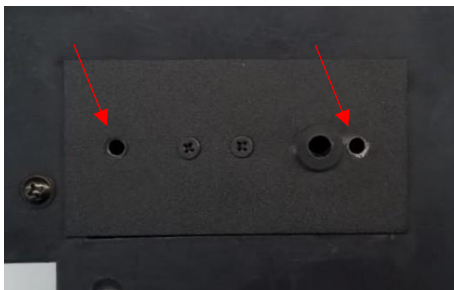
Enter the cables to marked places, seen in the above figure, which are going to be used.

4



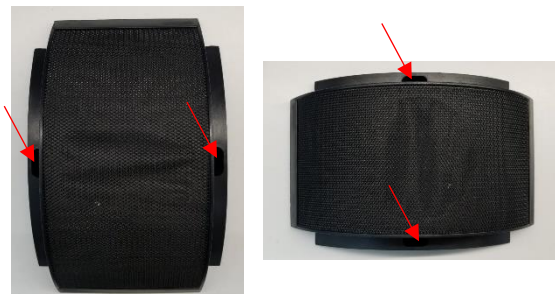
Screw from the top, from the marked places in the above figure, to fix everything in place.

5



Screw the lid back to the speaker from the marked places in the above figure.

6



Mount the speaker from the edges, marked in the above figures, horizontally or vertically with a screw.